

NEWSNOTE

ISSUE 25 APRIL 10, 2024

FROM THE PRINCIPAL'S DESK...

Hello, St. Mary's Families, and welcome back to school!

As we prepare for the final stretch of our school year, I wanted to share some information about upcoming events. Thanks for reading and have a wonderful week.

- Thursday, April 11 is our final Meat Raffle Dress Down Day. The funds raised from these days help defer the cost of hosting the event, which has grown into SME's second largest fundraiser. Thank you for supporting our dress down days and HSA's meat raffle.
- The meat raffle is a fun and rowdy event in all the right ways! Bring your dollar bills and take your chance to fill your freezer in time for summer! There will be extra raffles for you to try your luck including 50/50's, 40+ baskets & big ticket items which include an overnight stay & park passes for up to 8 people at Darien Lake!
- **Afterschool care will be ending at 5:00 on Friday, April 19th in preparation for the meat raffle.**
- Our STREAM Flower Sale begins today and will run through the end of the month. A variety of flowers & hanging baskets will be available from Mitchell Greenhouse. Delivery will be Thursday, May 9th, just in time for Mother's Day!
- Please be sure to save the date for our Spring Concert which will be held on Thursday, June 6th at 9:00am here in the gym. Mr. Kerns has been working with our students and is excited to share our musical talents with you all! The concert will last about an hour.

Have a wonderful week,

Mr. Olejniczak

STREAM FLOWER SALE

Our annual STREAM Flower Sale begins this week! You'll be able to view, place and pay for your order via Cheddar Up! Please keep an eye on your inbox for an email with all the details!

A variety of flowers will be available in 4.5" pots with a buy 5 get 1 free deal. There are also hanging variety & strawberry baskets available.

Delivery will be Thursday, May 9th under the pavilion near the church.



BY THE NUMBERS

We understand that every fundraiser will not be for everyone, but we do appreciate any & all support you can give!

Year round ways to help:

- ◇ Boxtops 4 Education

Scan in the app to earn!

We earned \$25.50 in February

- ◇ RaiseRight Program
- ◇ Tops in Education Program

Link your bonus card

Mega Raffle Update:

Tickets Sold: 516

Tickets Available: 484

2nd Early Bird Winning Tx: #111

TAX TIME

Is your preparer looking for our Tax ID Number? The directive given to us by the diocese is to *not* release that number. In its place you can/should indicate **Religious Exemption**. Specific questions can be directed to Mrs. Jezuit: (jezuitn@smeschool.com)

HOME SCHOOL ASSOCIATION

Welcome back SME! After a wonderful spring break, it's time for all the spring events and fundraisers to start popping up!

Meat Raffle: Come for a night of fun next Fri. 4/19. Check out the meat raffle section of the NN for all the details!

Spring Book Fair Information: The Scholastic Spring Book Fair will be held on Thursday May 2nd & Friday May 3rd during the school day and during the art show. Help make this the best book fair ever by [signing up to volunteer](#). Starting tomorrow, April 11th, you can set up your child's e-wallet. Just head to the [book fair homepage](#) and click on e-wallet. An e-wallet is a way for students to shop without cash at the book fair and is a digital payment account at the fair. You choose the amount you would like on your child's e-wallet and they get to have fun shopping. If you have any questions about the book fair, please contact hsa@smeschool.com.

Penny Fair Information: Next week all the information for the Penny Fair on May 10th will be in the NN. Mark the date on your calendar for a fun filled day of carnival games, cake walk, and prizes! The cost for each student is \$5. All the important details will be coming home next week!

Date Knight Pictures: Please don't forget to download your pictures from the Date Knight dance via the following link:

<https://kellytanskiphotography.pixieset.com/2024smemothersondance/>

April Events:

11th: Meat Raffle Dress Down Day \$1 Donation

15th: Spirit Wear Dress Down Day

19th: Meat Raffle

May Events:

2nd & 3rd: Spring Book Fair

6th: Spirit Wear Dress Down Day

10th: Penny Fair



UPCOMING EVENTS:

- **Wed. 4/10** - Flower Sale Begins
- **Thurs. 4/11** - \$ Dress Down for Meat Raffle
- **Fri. 4/12** - CW Mass
- **Mon. 4/15** - SPIRIT Shirt Dress Down Day
- **Fri. 4/19** - Meat Raffle (Doors @ 5:30), Afterschool Ends @ 5!
- **Tues 4/30** - Flower Sale Ends
- **Thurs. 5/2** - Art Show, Sp. Book Fair
- **Fri. 5/3** - Christian Witness Mass 8:30am, Spring Book Fair
- **Wed. 5/8** - PR3 Upload: K-8
- **Thurs. 5/9** - Ascension Thursday Mass, 8:30
- **Fri. 5/10** - May Crowning Mass, 8:30
- **Fri. 5/10** - Penny Fair Day
- **Fri. 5/17** - Hope Ribbon Mass, 8:30
- **Thurs. 5/23** - Walk-a-Thon
- **Fri. 5/24 & Mon 5/27 - NO SCHOOL**

INSIDE THIS ISSUE:

| | |
|------------------|---|
| PRINCIPAL'S DESK | 1 |
| BY THE NUMBERS | 1 |
| Flower Sale | |
| Tax Time | 1 |
| HSA | 1 |
| Mega Raffle | 2 |
| Meat Raffle | 2 |
| Nurse Notes | 2 |
| Raise Right | 2 |
| Athletics | 2 |
| Parish Corner | 2 |
| 8th Grade Info | 2 |
| Stay in the Know | 2 |



ST. MARY'S ELEMENTARY SCHOOL

2 St. Mary's Hill
Lancaster, NY 14086

Phone: 716-683-2112
Fax: 716-683-2134
www.smeschool.com



UPON THIS HILL,
WE DO GOD'S WILL



Social Responsibility

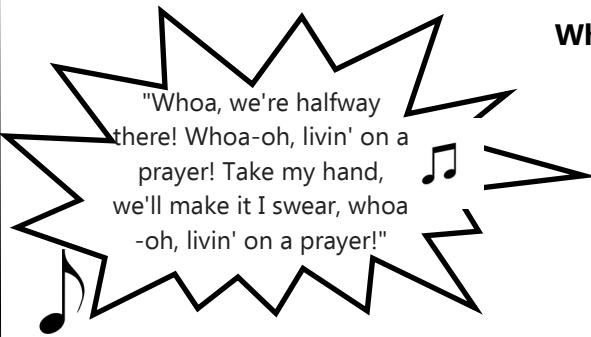


Spiritual Growth



Academic Excellence

MEGA RAFFLE



When: June 7, 2024 at 6:00PM

Where: St. Mary's High School

Tickets sold to date: 516 **Tickets remaining:** 484

The top prize is \$35,000 with 13 other prizes to win.

We only have 1 more early bird drawing before the BIG event in June!

Our 2nd Early Bird Winner was ticket #111 - Congratulations!

What would you do with \$35,000??

Buy your Mega ticket for your chance to find out!

We are asking you for your help in obtaining either sponsorships and/or raffle donations. If your family has any connections or if you know of any businesses or individuals who might be interested in contributing, please see the attached electronic letter.



We also have an [Amazon Wish List](#) set up if you would like to donate an item for the basket raffle. Thank you to those who have already donated items! We will be collecting items until June and remember you can always purchase items with a RaiseRight Gift Card!

If you are interested in volunteering email megaffle@smeschool.com.

SCAN HERE FOR ALL YOUR MEAT RAFFLE TICKET NEEDS:



MEAT RAFFLE



April 19th

Doors @ 5:30 Spin @ 7



If you are able to donate any of your time, please sign up using the link below. You're going to want to be a part of the fun! [Meat Raffle Volunteer Sign Up](#)

Freezer full of meat side raffle tickets went out to every family to sell or purchase. You need not be present to win! The table/ticket request letter is available here: [Ticket/Table Reservation Order Form](#) & on our website (Fundraising Tab: Meat Raffle) or hard copy by request. You can now place your order via [Cheddar Up](#) online!

The meat raffle needs your help! Show off your creativity by donating a basket for us to raffle off at the meat raffle.

All donations can be dropped off for Mrs. Boundy at the main office.

\$ Dress Down Day 4/11 will benefit the raffle baskets!



NURSE NOTES

Be sure to read this months Nurse Notes flyer which is attached electronically today!

Our annual calendar for the 24-25 school year is in the works! We will share that with everyone as soon as it is available.

ATHLETICS

Information for spring sports has been sent out. If you have any questions, please contact our athletic department directly: athletics@smeschool.com



PARISH CORNER

Did you know there are many opportunities for your child(ren) to participate in the Mass celebrations here at St. Mary's?

Our **Family Mass** takes place once a month at the Sunday, 10am Mass. Masses have been scheduled for the months of March - June. Click the following link to see the dates and the roles offered for your child(ren): <https://www.signupgenius.com/go/10C0F4DA8A72EA4F9C52-48001519-stmary>



RAISERIGHT

Reminder: Families earn 100% of rebates up to \$250 and an 80/20 split thereafter.

IMPORTANT ANNOUNCEMENT:

Until further notice **TIM HORTONS** gift cards are **UNAVAILABLE!** We apologize for the inconvenience and appreciate your understanding with this situation which is out of our control.

If you have any questions, please email raiserright@smeschool.com. Our team is here for you!

Creating an online account: [RaiseRight.com](https://www.raiserright.com)

For a complete list of participating retailers visit the shop with scrip website:

<https://www.raiserright.com/brands>

Here is a quick link to the order form: [RR Order Form](#)

8TH GRADE INFO

Please remember to return your "Hope Ribbon Family Form" to Miss Sullivan by next Friday, April 19th. You can send in the hard copy or an electronic version. Check your email for all the details! Save the Date for Friday, May 17th at 8:30am in the Church!

Hope Ribbon is a special day for our 8th graders. While at mass, Hope Ribbons are blessed and pinned onto the 8th grade students' shoulder by a person who is important to them in any/many ways.

Hope Ribbons are worn for the rest of the school year as a reminder of their years at SME and as symbols of hope as they look forward to their graduation and future.

STAY IN THE KNOW

Save the Date: 5/10 May Crowning Mass, 8:30am

Save the Date: 5/10 Penny Fair

Save the Date: 5/17 Hope Ribbon Mass

Make Note: No School: 5/24-27

Save the Date: 5/31 CW Mass

Save the Date: 6/6 Spring Concert, 9:00am

Make Note: 6/7 Pre-K Moving Up & Graduations

Save the Date: 6/7 Mega Raffle



Notes From the Nurse

April 2024

Dara Sirianni RN, BSN

Spring Sports

All students who wish to participate in school sports **MUST HAVE** a valid NYS Physical on file in the Health Office. Please hand these in ASAP to avoid delays in your child participating in practices/games.



Autism or ASD (Autism Spectrum Disorders) affects 1 in 44 children in the US.

Facts related to ASD:

- Boys are 5 times more likely to receive an earlier diagnosis than girls.
- One of the fastest growing disorders in the US
- No 2 people with ASD will have the exact same patterns of behavior or neurological impairment.
- Hyperlexia: or the ability to read above ones age level may be present in those with Autism.
- Children with ASD often find themselves drawn to creative activities such as drawing, art, theater and dance.
- Many Autistic children have difficulties with coordination and balance and may have delayed skills such as learning to ride a bike or tying their shoes.
- Many ASD children will learn to “mask” or “hide” their Autistic traits in an attempt to fit in with their peers, girls are better at this than boys which may be a cause of them being under diagnosed.
- Many children with Autism have delayed or absent social skills that are commonly seen in peers of similar age groups, this leads to lack of friendships and ASD children may prefer to play independently.

For more information visit: <https://www.autismspeaks.org>

Group A Streptococcal Infections:

Per the Department of Health, Group A strep infections are on the rise. These infections can be seen happening with viral respiratory infections either preceding the infection or at the same time.

Illnesses caused by Group A Strep include:

- Strep Throat
- Impetigo
- Scarlet Fever
- Rheumatic Fever
- Cellulitis

If you suspect your child may have any of the above illnesses please contact their Pediatrician.

For more information visit:



Group A Streptococcal (GAS) Disease
Group A Strep website for...
cdc.gov

Common Childhood Viruses

Health Office Information

Office Hours: School Days 9:30-1pm

Phone: (716) 683-2112 ext 128

Fax: (716) 683-2134

email: nurse@smeschool.com



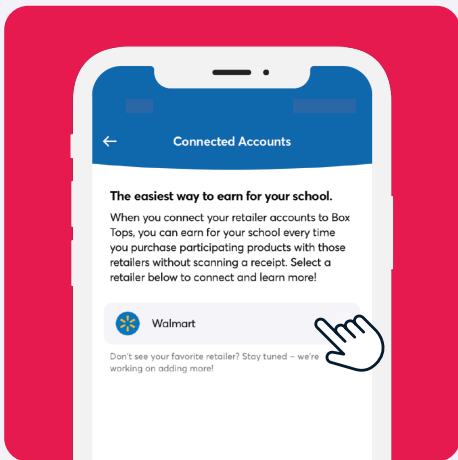
EARN FOR YOUR SCHOOL WITHOUT SCANNING!



Now you can earn cash for your school every time you buy Box Tops products at Walmart — no scanning required! Just follow these simple steps to connect your Box Tops and Walmart accounts.

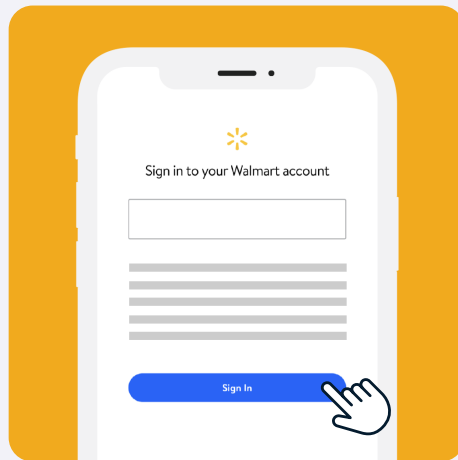
NEW FEATURE!

HOW IT WORKS:



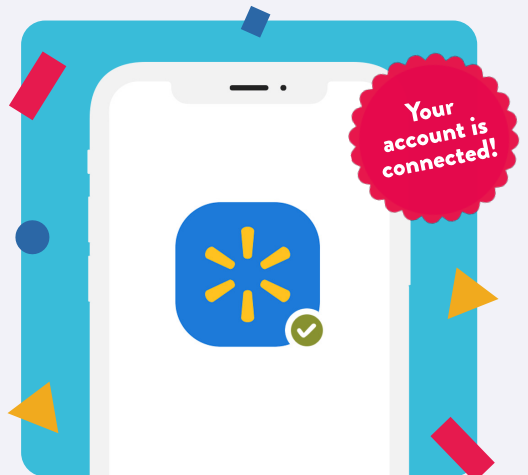
STEP 1

Download the Box Tops app or update to the latest version. In the app, go to your profile, then tap on “Connected Accounts” and select “Walmart.”



STEP 2

When prompted, sign in to your Walmart account, (If you don't have a Walmart account, you'll be prompted to create one). Make sure to save a payment method to your Walmart account.



STEP 3

Your Walmart account is now connected to Box Tops, so your qualifying purchases made in-store and online with a saved payment method will earn for your school! Box Tops will be credited after you receive your Walmart items.

DON'T HAVE THE BOX TOPS APP YET? GET IT AT [BTFE.COM/APP](https://www.btfecom/app)

CONNECT YOUR ACCOUNTS NOW FOR THE EASIEST WAY TO EARN

